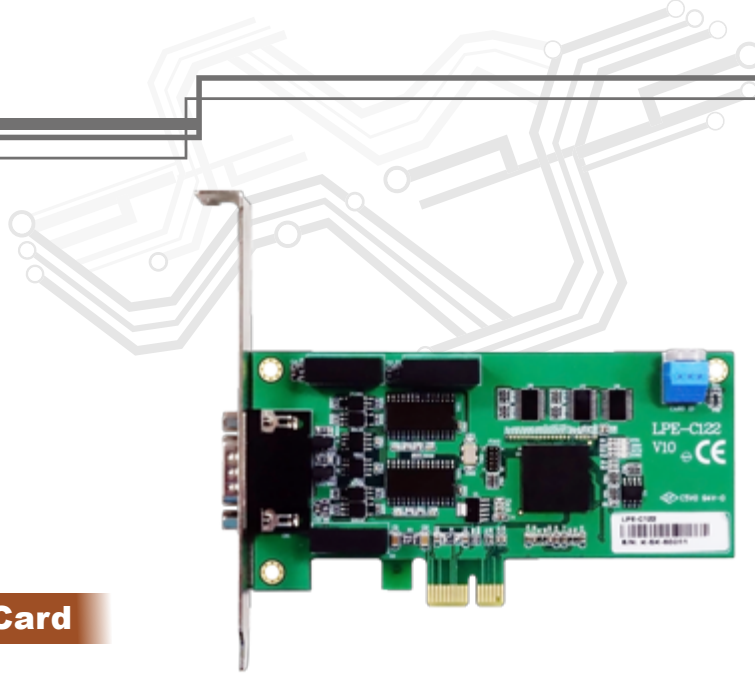


PCI Express LPE-C122



2-port Isolated CAN Bus Card

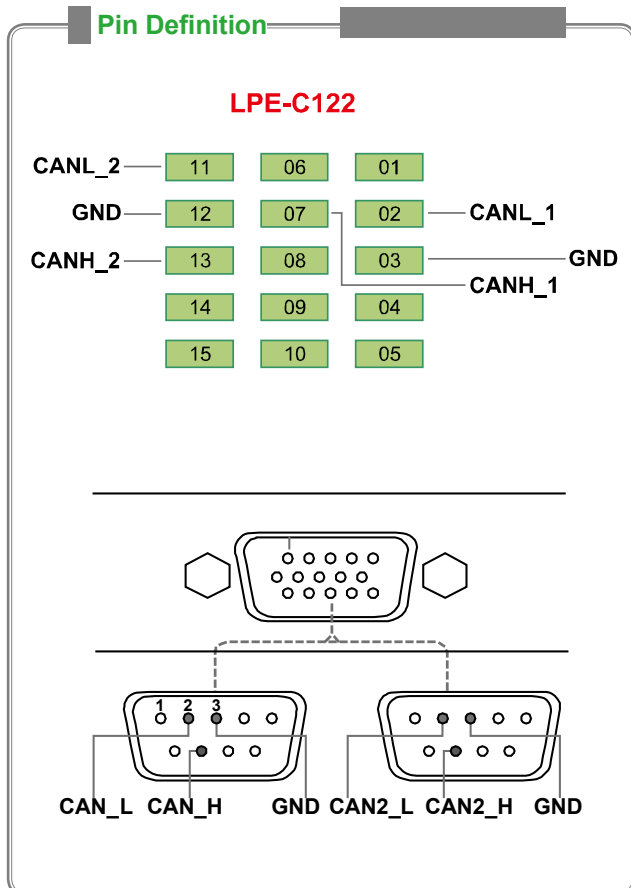
Features

- PCI Express x1 compliant
- Low profile form factor
- CAN 2.0 A,B Protocol
- Two independent CAN communication operation
- Up to 1 Mbit/s programmable transfer rate on each port
- 120 ohm termination resistor selected by jumper

Specification

CAN	
Number of port	2
CAN controller	SJA1000
Protocol	CAN 2.0 A,B
Speed	1Mbps
Signal support	CAN_H, CAN_L, GND
Isolation voltage	3750Vrms
Termination resistor	120 ohm selected by jumper
Connectors	DB15 Male
General	
Specifications	1-lane 2.5 Gb/s PCI Express
Power consumption	3.3VDC at 100mA, 12VDC at 100mA typical
Working temperature	0 to 60°C

Pin Definition



Ordering information

- **LPE-C122**
2-port Isolated CAN Card
- **Y Cable from DB15 to Two DB9 MM**
DB15 - DB9M+DB9M, 0.5M

Software Supporting

- **Windows 2000/XP/7 WDM driver**
Support Visual C/C++, C#, Microsoft .NET Framework programming on Windows 2000/XP/7 platform with DLL
- **DeviceNet DLL supported by request**