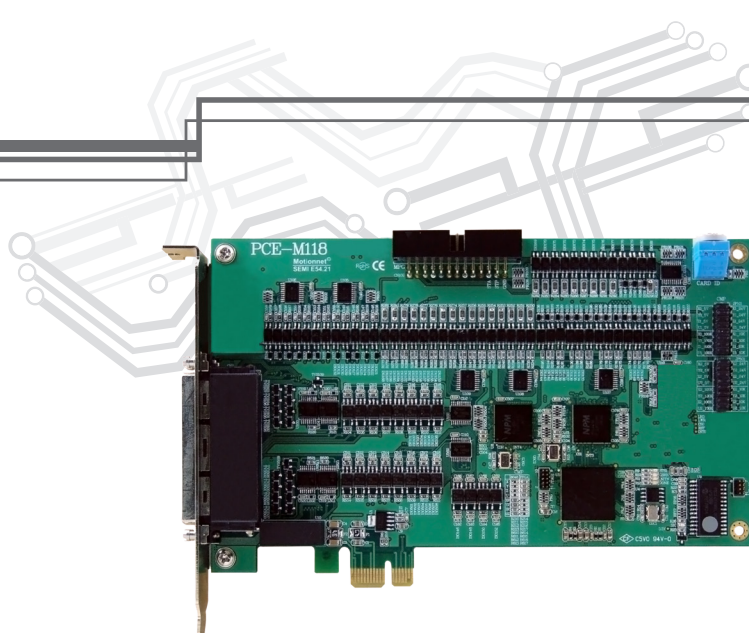


PCI Express PCE-M118



8-Axis Motion Card

Features

- PCI Express x1 compliant
- On-board 8-axis motion control with Max. 6.5MHz pulse output rate
- Linear, circular, helical and continuous interpolation
- High speed position latch function
- Simultaneously start/stop on multiple axes
- Programmable acceleration and deceleration time
- Programmable pulse output and interrupt
- Position compare and trigger output
- Compare output FIFO x 4
- Hardware IC with unique ID

Ordering information

- **PCE-M118**
8-axis Motion Card
- **107-T142-GEN**
Terminal board for 4-axis
- **107-T160-DUMP**
Terminal board for 4-axis
- **107-T161-DUM**
Terminal board for 4-axis
- **107-T162-DUMG**
Terminal board for 4-axis
- **SCB-186-20A**
VHDCI 100 pin + SCSI 100 pin, 2M

Specifications

Motion Control

Pulse output mode	OUT/DIR, CW/CCW, A/B
Pulse output rate	Max. 6.5Mpps
Position range	32 bits
Home return mode	13 types
Velocity profiles	T-curve and S-curve
Interpolation mode	Linear, circular, helical and continuous
Counter for encoder feedback signals	32 bits
Position latch input	LTC x 8
Position compare output	CMP x 4, 1024 points / ch. CMP x 4
Incremental encoder input	±EA x 8, ±EB x 8
Encoder index signal input	±EZ x 8
Machine interface	PEL x 8, MEL x 8, ORG x 8, SLD x 8
Servo driver interface	ALM x 8, RDY x 8, SVON x 8, INP x 8, ERC x 8, ALMRST x 8
Simultaneous start/stop motion input	STA, STP
Emergency input	EMG x 2
I/O pin type	Optically isolated with 3750Vrms on all VHDCI 100 pin x 2

General

Bus type	1-lane 2.5 Gb/s PCI Express
Power consumption	3.3VDC at 430mA, 12VDC at 55mA typical
Working temperature	0 to 60°C